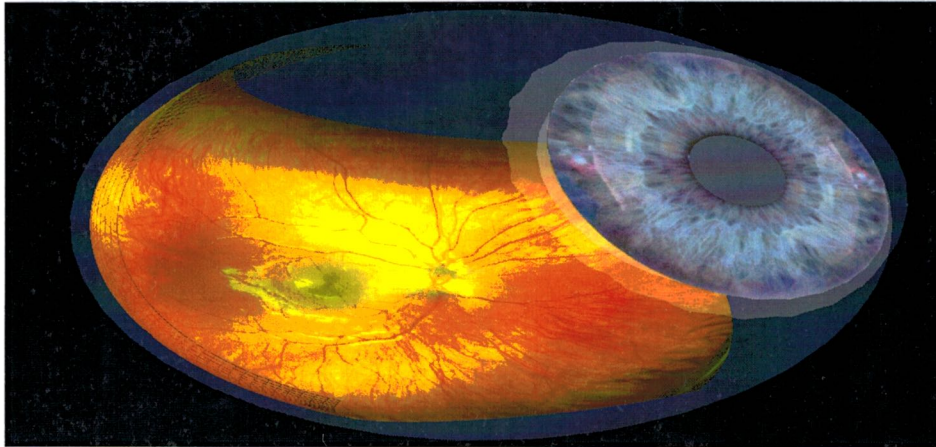




Retinal Exam

optomap® Retinal Exam Example



At Manchester Eye Care Center, we pride ourselves on providing our patients with the highest possible standard of care. Because of this, we now offer to perform the optomap® Retinal Imaging Exam on all of our patients as part of an annual comprehensive eye exam.

This fast and easy procedure takes a panoramic view of your retina and allows your doctor to see retinal problems such as macular degeneration, glaucoma, retinal holes and detachments, melanomas, cancer, and diabetic retinopathy, without dilation for most patients. It also allows precise documentation of the retina that can be compared from year to year.

Dr. Manders believes that the optomap® Retinal Exam is an essential part of your comprehensive eye exam and recommends it for all patients once per year.

The \$29 copay for this procedure is generally a non-covered service unless being used to actively follow disease. Any questions you have about the optomap® Retinal Exam can be directed to Dr. Manders when she reviews the images with you during your examination.

_____ Yes, I want to have an optomap® of my eye for documentation

_____ No, I do not wish to have an optomap® of my eye

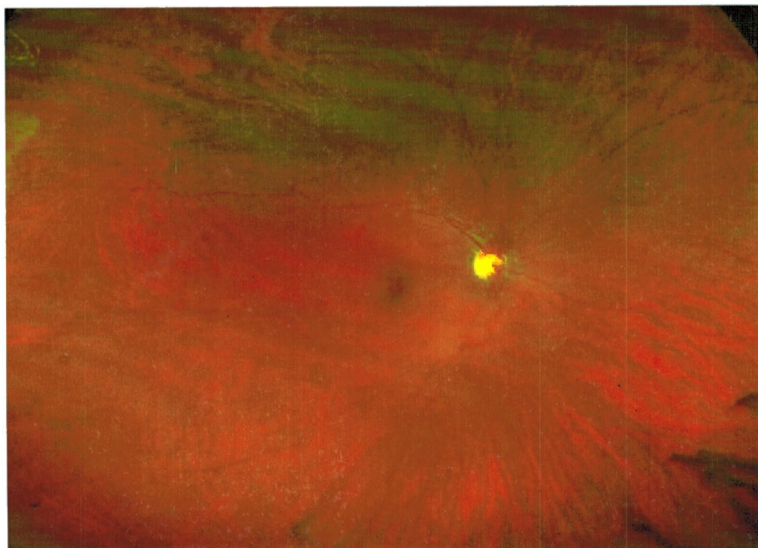
****Please note: Patients with seizure disorders should decline this exam.****

Signature: _____

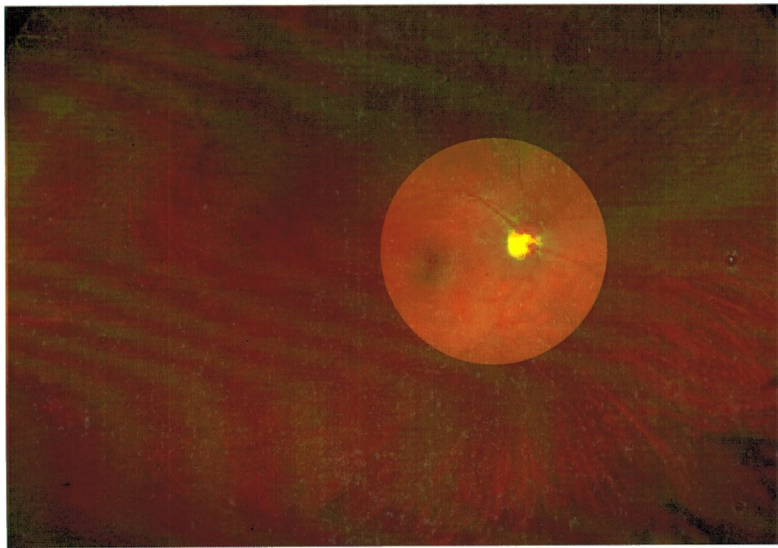
Date: _____

Comparison of Fields of View

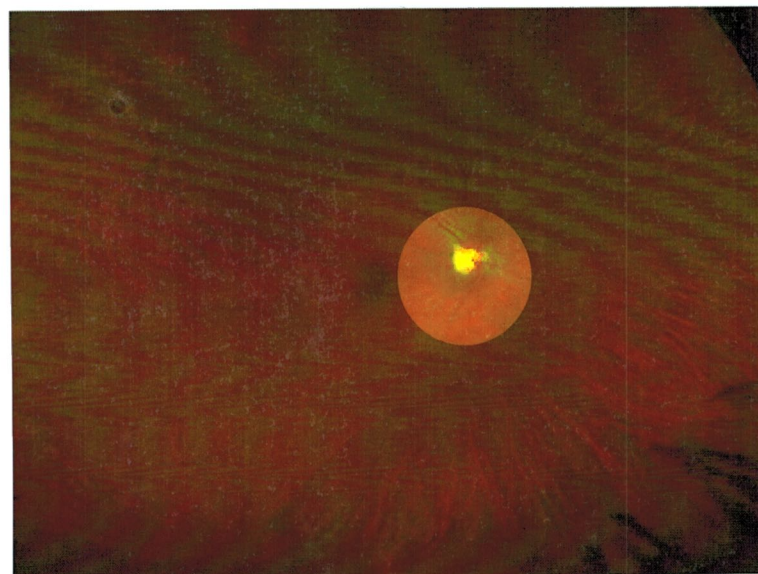
An optomap retinal image compared to conventional devices in a single capture.



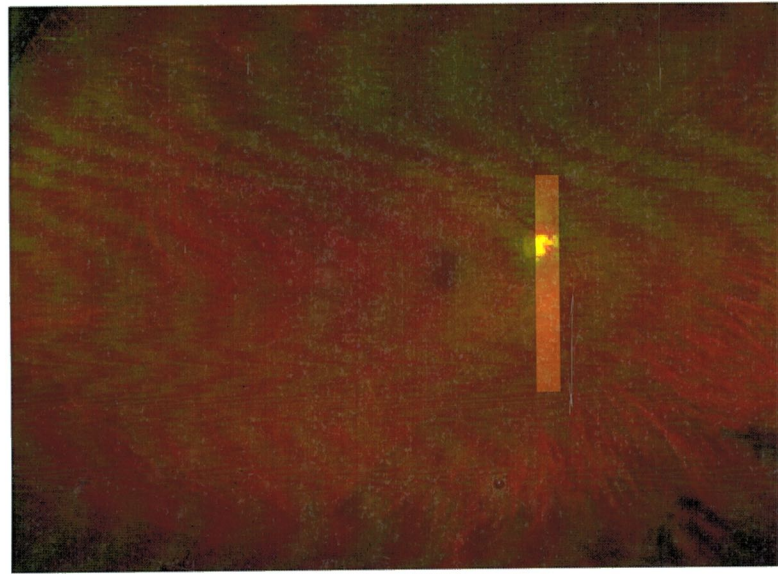
optomap® Retinal image
200°



Fundus Camera
about 45°



Indirect Ophthalmoscope
about 30°



Slit lamp
with 90° diopter Lens

Optos, Inc.
67 Forest Street
Marlborough, MA 01752
USA

866.OPTOMAP (678.6627)

©2011 Optos. All rights reserved. Optos® AND optomap® are registered of Optos plc. P/N 492001

 **optomap®**
ultra-wide digital retinal imaging

optomap.com